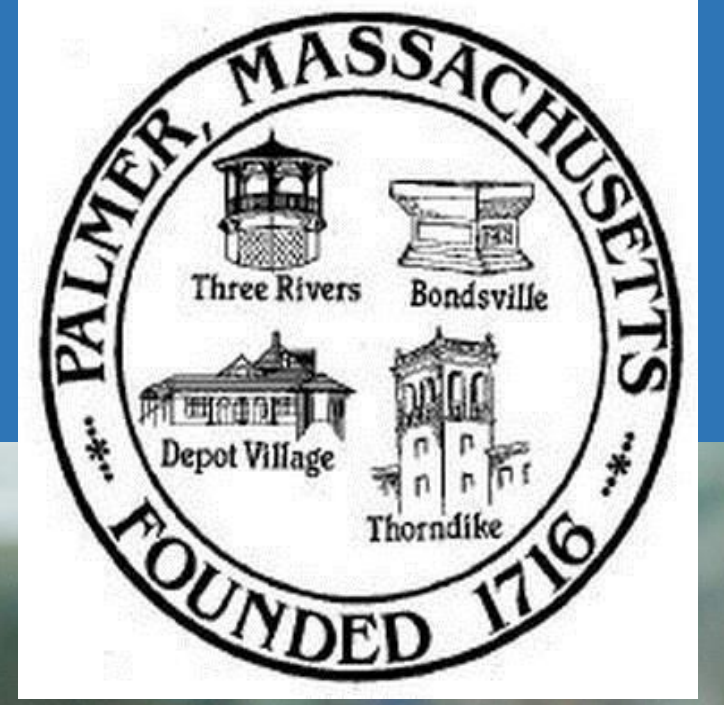


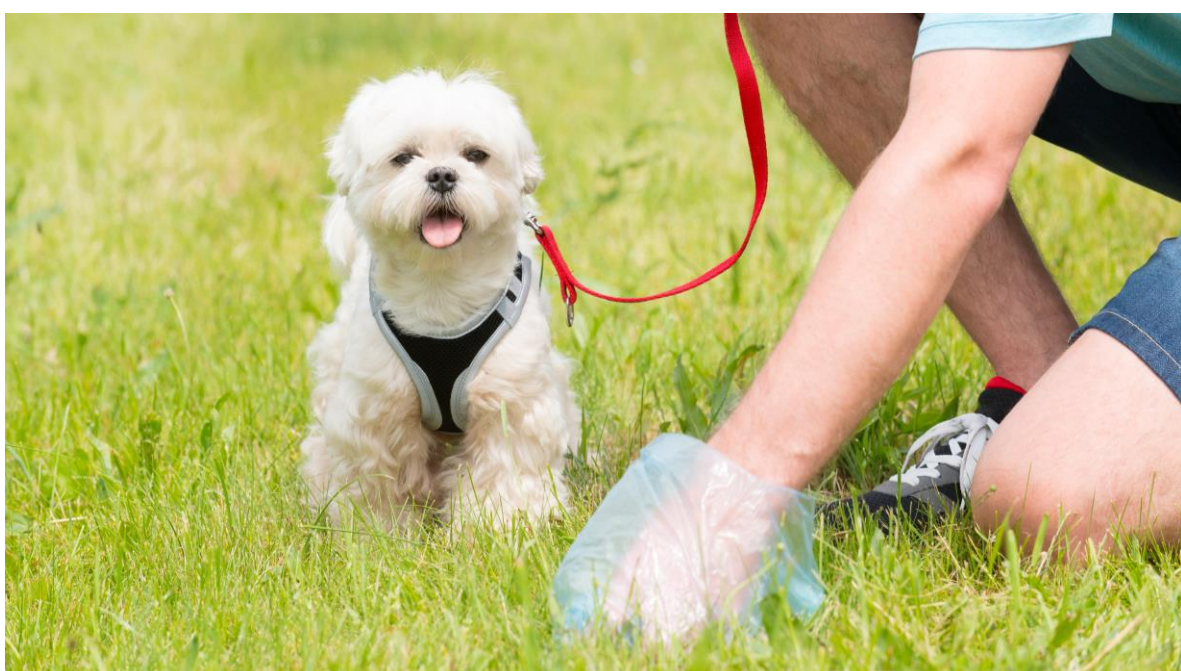


Clean water begins with you. Let's Think Blue.



Polluted runoff threatens the health of Massachusetts water. You can do your part at home, at work and at play to help keep our streams clear of pollution after rain and snow melt.

For more tips and information visit www.thinkbluemassachusetts.org.



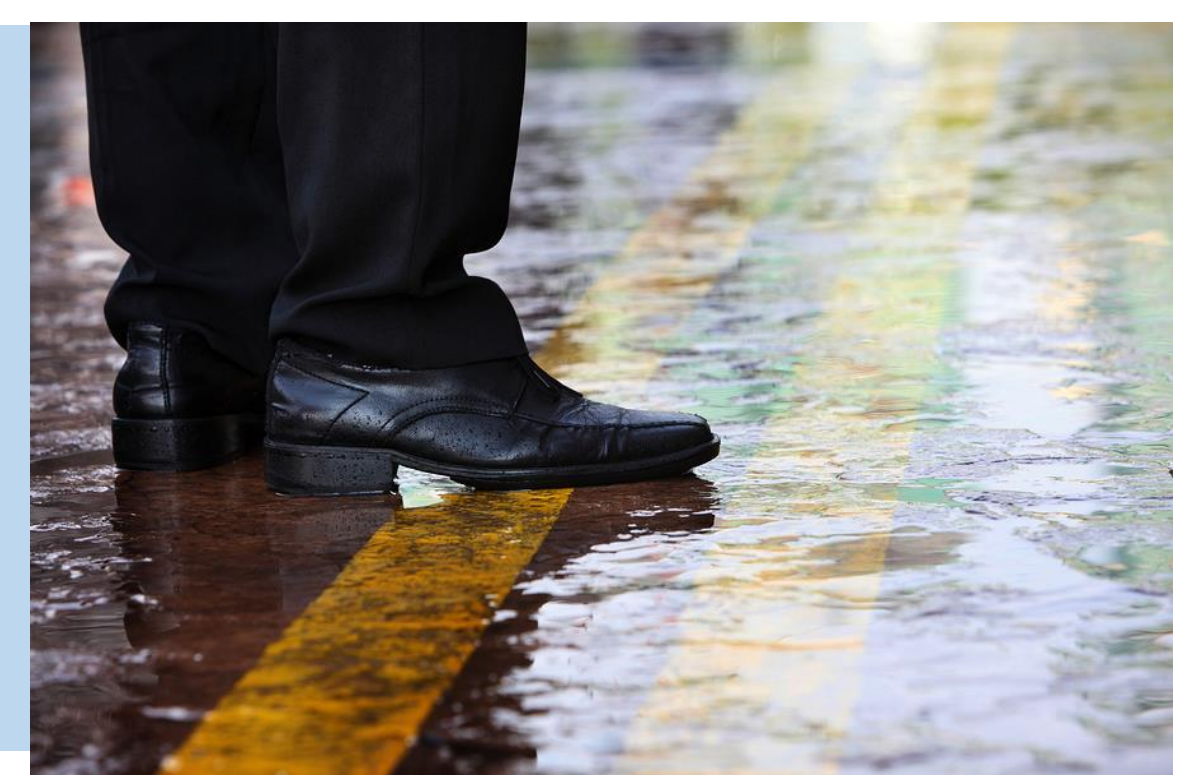
Scoop it! Pet waste is gross and can make you sick. Bag and dispose of solid pet waste in trash cans.

Close it! Rain water running off of trash cans sends waste into nearby streams. Close your trash can lids, cover dumpsters, and properly dispose of trash to keep pollution locked away.



Stop it! Stormwater pollution often begins at construction sites, but it doesn't have to. Take steps on your job site to prevent dirt from washing into nearby streams, roads and storm drains.

Catch it! Industries and businesses can keep oil, gas, and grease from washing into streams. Use drip pans to catch fluids. Keep absorbent materials close by to clean up small spills. Fix leaks and clean up spills quickly.



Learn more at www.ThinkBlueMassachusetts.org