

Town Of Palmer

Palmer Redevelopment Authority

David Swirk, Chairman

413-374-0078

swirk@pvrr.com

AVAILABLE INDUSTRIAL SPACE

1412-1416 Main Street, Palmer, MA



Address: 1412-1416 Main Street Palmer
Map 57, Lot 1

Location: Center of Palmer 1-90 (MassPike) via
exit 8

Available Size: 27,007 sq ft Open Land

Lot Size: .62 Acre

Status: Prime Downtown Area. Shovel Ready for
Development.

Property Description

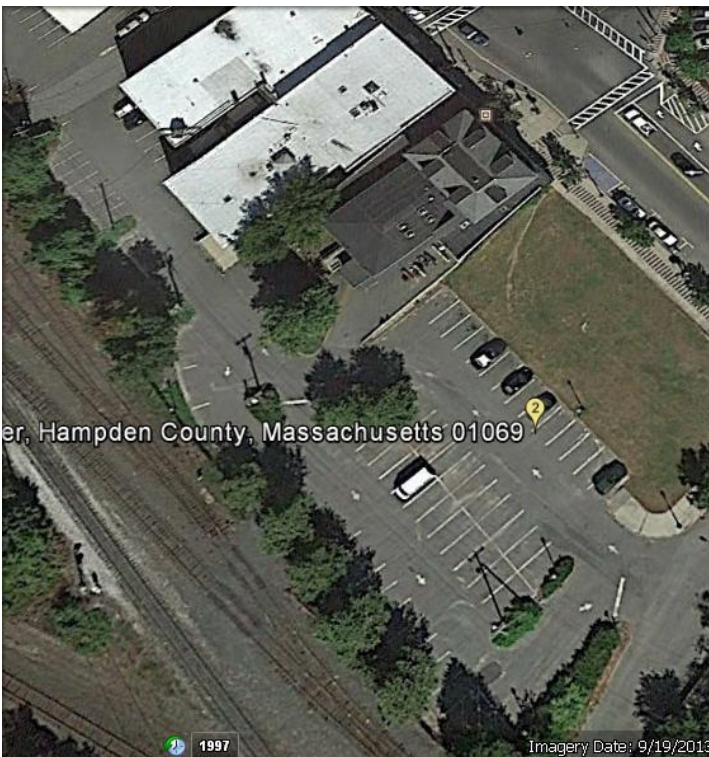
Land Use: Zoned Village Center (VC1)
Gas: On Site-Columbia Gas
Water: On Site City – Palmer Water Dept
Sewer: On Site City – Palmer
Power: On Site National Grid
Access: .75 Mile From MassPike, Exit 8, via 20W

LOT DEVELOPMENT OPTIONS:

- Cleared Lot
- Multi-level Possibilities; Up To 5 Stories
- Build Out Water and Traffic Studies Available
- Zoned VC1- Mixed Use Capability

OTHER INCENTIVES:

- Priority Development Site under 43D. Designated
As Economic Opportunity Area by Massachusetts
Office of Business Development



For further information contact Economic Development Director, [Linda Leduc](#)