



Town Of Palmer

AVAILABLE INDUSTRIAL SPACE

Paul Les
19 Colonial Street
Palmer, MA 01069
413-583-8393
rbenter@mail.csinet.net

Chamber Road Industrial Park – Palmer, MA



Address: 8 Chamber Road Industrial Park
Three Rivers, Palmer, MA 01080

Location: Palmer, MA, 1-90 (Mass pike) via exit 8

Available Size: 411,206 SF

Lot Size: 9.44 Acres

Status: Industrial Park/ Undeveloped, level, open land. Shovel ready for development.

Property Description

Land Use: Zoned Industrial B

Gas: Columbia Gas

Water: City – Three Rivers Water Dept. existing parallel 12" main and 8" lines

Sewer: City – Three Rivers, 8" main on Caulkins Road

Power: National Grid

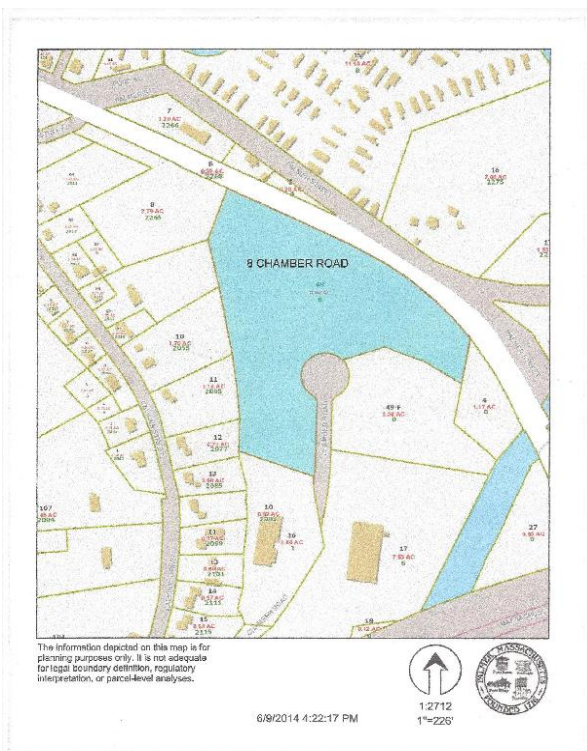
Access: 3 Miles From MassPike, Exit 8, via 20 West/ 30 Miles From Bradley Airport

LOT DEVELOPMENT OPTIONS:

- ✓ May be subdivided to Suit
- ✓ Minimum 1 acre lots. Existing conceptual parcel proposes 3 lots; 2 acre, 3 acre & 4.5 acre

OTHER INCENTIVES:

- Priority Development Site under 43D. Designated As Economic Opportunity Area by Massachusetts Office of Business Development



For further information contact Economic Development Director, [Linda Leduc](#)