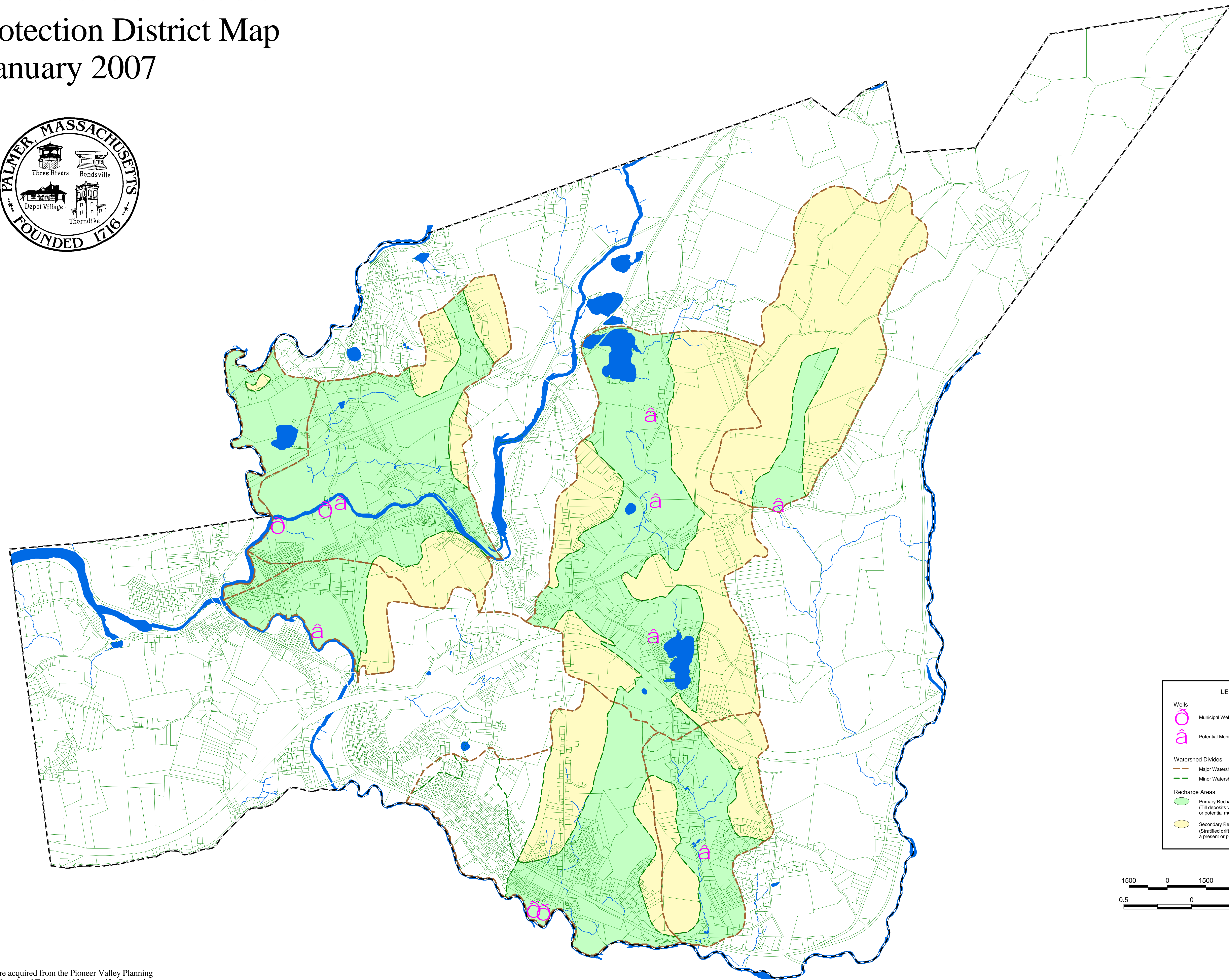
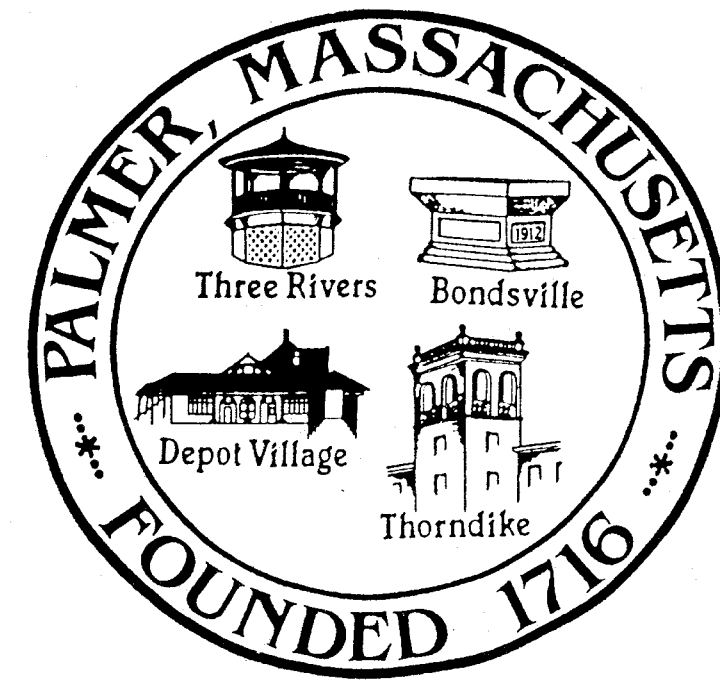
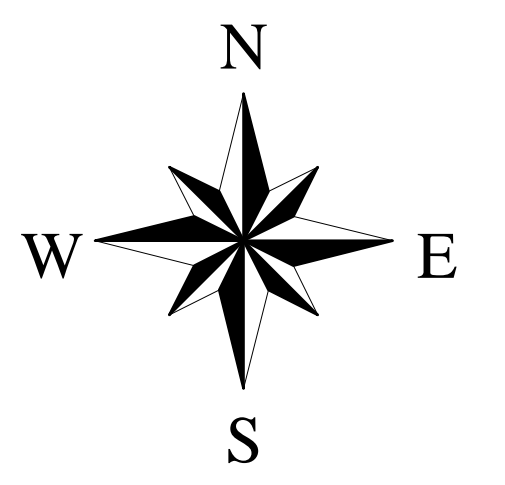


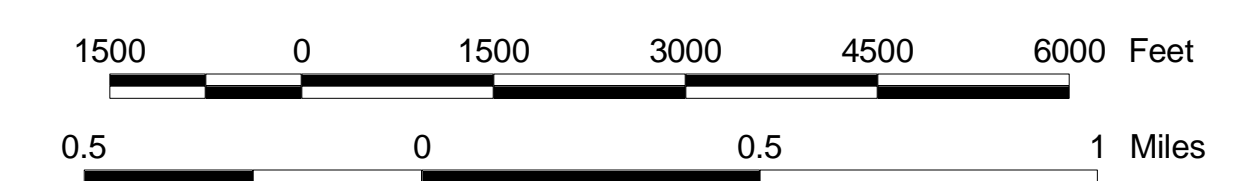
Palmer, Massachusetts

Aquifer Protection District Map

January 2007



LEGEND	
Wells	
	Municipal Well or Reservoir Site
	Potential Municipal Well or Reservoir Site
Watershed Divides	
	Major Watershed Divide
	Minor Watershed Divide
Recharge Areas	
	Primary Recharge Area (Till deposits within the watershed of a present or potential municipal well or reservoir)
	Secondary Recharge Area (Stratified drift deposits within the watershed of a present or potential municipal well or reservoir)



Source Information:
 Aquifer Protection District boundaries were acquired from the Pioneer Valley Planning Commission Aquifer Protection District Map, dated February 1987. Aquifer Protection District boundaries last updated based on the amendment voted on and approved by the Town Council March 23, 2005.

Parcel boundaries and hydrography were acquired through the digital conversion of the Town of Palmer's Tax Maps by Fuss & O'Neill, Inc. Updates were made for most of the changes in the Town through February 2004.

