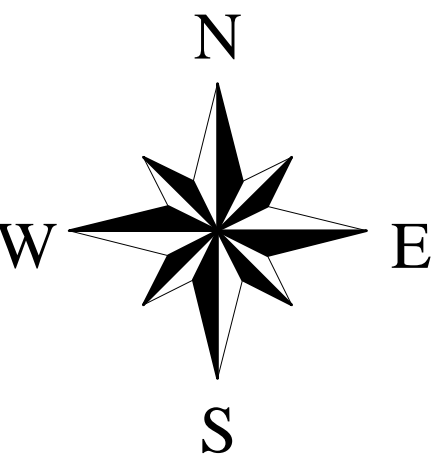
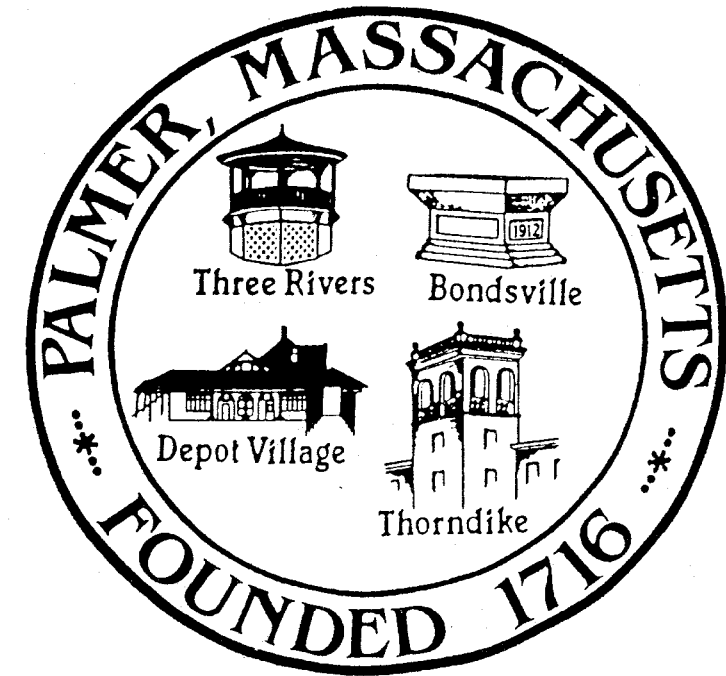


Palmer, Massachusetts

River Protection Act

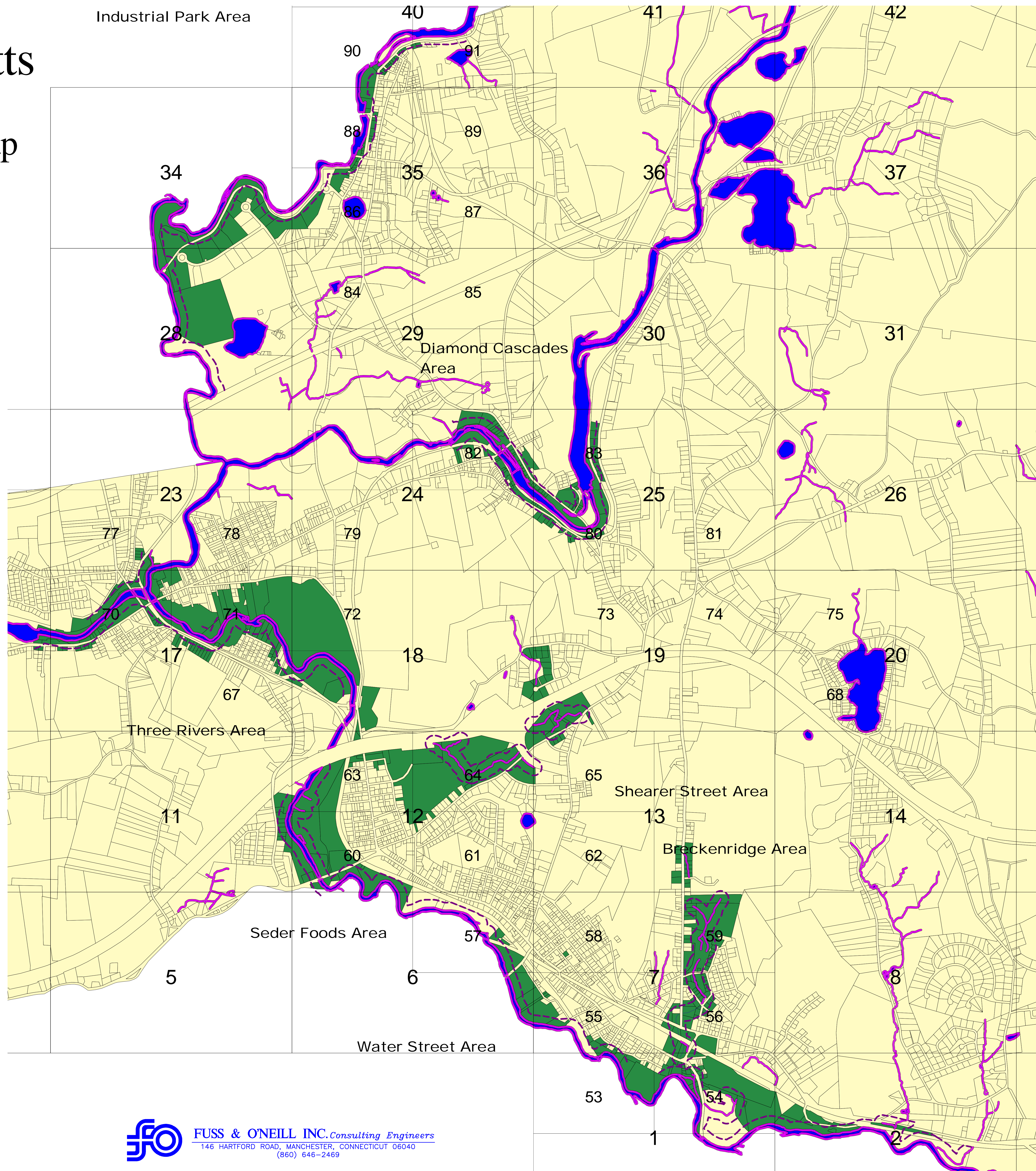
25-foot Set-back Area Map

May 2004



Affected Lot Pin Numbers

1-1	13-58	54-2	56-124	67-61	71-16	80-43	86-19
1-2	13-59	54-3	56-125	69-2	71-25	80-44	86-20
1-4	13-60	54-4	56-126	69-3	71-26	80-45	86-29
1-4-1	13-61	54-5	56-128	69-14	71-27	80-46	86-30
1-5	13-64	54-6	56-129	69-15	71-28	80-81	88-1
1-6	13-65	54-8	56-130	70-1	71-29	82-9	88-2
1-7	13-66	54-9	56-132	70-2	71-30	82-10	88-3
2-82	13-68	54-10	56-133	70-3	71-31	82-15	88-4
2-83	18-1	54-11	56-134	70-4	71-32	82-18	88-5
2-84	18-7	54-12	56-141	70-5	71-59	82-19	88-6
2-85	19-15	54-13	56-142	70-6	71-62	82-20	88-7
2-86	18-16	54-14	56-143	70-8	71-63	82-21	88-8
2-87	18-19	54-15	56-148	70-13	71-65	82-22	88-9
2-88	18-23	54-16	57-6	70-14	71-66	82-23	88-10
2-89	18-35	54-24	57-7	70-15	71-74	82-24	88-12
2-90	19-14-10	54-44	57-103	70-16	71-75	82-25	88-13
6-1	19-14-11	54-45	59-28	70-19	71-83	82-27	88-21
6-2	19-14-12	54-46	59-29	70-20	71-84	82-28	88-22
6-3	19-14-13	54-49	59-29-1	70-21	71-98	82-29	88-23
7-2	19-14-14	55-18	59-29-2	70-74	71-98-1	82-57	88-24
11-110	19-14-15	55-19	59-29-3	70-75	71-99	82-58	88-25
11-111	19-14-15	55-19	59-29-3	70-75	71-99	82-58	88-25
11-112	19-14-16	55-32	59-29-4	70-76	77-48	82-59	88-26
11-113	19-14-17	55-33	59-33	70-78	77-49	82-60	90-1
11-114	19-14-9	55-51	59-34	70-79	77-50	82-61	90-2
11-115	19-18	55-76	59-37	70-81	77-51	82-62	90-3
11-116	19-19	55-88	59-37-1	70-82	77-56	82-63	90-4
11-117	19-20	55-89	59-38	70-84	77-57	82-64	90-5
11-131	19-36	55-90	59-39	70-85	80-8	82-65	90-6
12-2	19-37	55-185	59-41	70-86	80-9	82-66	90-43
12-3	19-40	56-3	59-43	70-89	80-11	82-67	90-44
12-4	19-41-1	56-4	59-45	70-90	80-12	82-68	90-45
12-6	24-30	56-5	59-46	70-91	80-13	82-69	90-46
12-7	25-10	56-6	59-47	70-93	80-14	82-70	90-47
12-8	25-10-3	56-7	59-49	70-104	80-15	82-71	90-48
12-8	25-11	56-8	59-50	70-105	80-16	82-72	90-49
12-9	25-12	56-9	63-37	70-106	80-18	82-73	90-50
12-20	28-30	56-10	63-41	70-107	80-19	82-74	90-51
12-21	28-31	56-23	63-42	70-108	80-20	82-75	90-52
12-22	28-32	56-24	63-43	70-109	80-21	82-76	90-60
12-23	28-34	56-24-2	63-44	70-187	80-22	82-77	91-44
12-24	34-1	56-61	63-45	70-188	80-23	82-78	91-45
12-25	34-2	56-62	63-46	70-189	80-24	82-80	
12-26	34-4	56-63	63-47	70-190	80-25	82-81	
12-28	34-5	56-64	64-10	70-191	80-26	82-82	
12-29	34-6	56-94	64-11	70-192	80-27	82-83	
13-30	34-7	56-109	65-21	70-193	80-28	83-1	
13-32	34-10	56-110	65-22	71-1	80-29	83-11	
13-3	34-11	56-114	65-23	71-2	80-32	83-12	
13-4	34-14	56-115	65-24	71-3	80-33	83-13	
13-7	34-15	56-117	67-32	71-4	80-34	83-14	
13-8	34-16	56-118	67-33	71-5	80-35	83-15	
13-9	34-16-1	56-119	67-46	71-6	80-36	83-16	
13-10	53-3	56-120	67-52	71-8	80-37	83-17	
13-54	53-6	56-121	67-54	71-9	80-38	83-18	
13-55	53-7	56-122	67-55	71-10	80-40	83-19	
13-56	53-8	56-123	67-57	71-11	80-41	83-20	
13-57	54-1	56-123-1	67-60	71-15	80-42	83-21	



Source Information:

Parcel boundaries and hydrography were acquired through the digital conversion of the Town of Palmer's Tax Maps by Fuss & O'Neill, Inc. Updates were made for most of the changes in the Town through February 2004.